



Public Health Division
Office of the State Public Health Director

2025–2029

State Health Improvement Plan

February 2026



Contents

Acknowledgments	3
Letter from OHA Public Health Director	5
Executive summary	6
Guiding values	8
Introduction and background	9
Background: Oregon health improvement.....	9
Health disparities and health equity.....	11
Development process	11
Tracking and accountability	15
Priorities and Oregon’s actions	16
How to read the strategies that follow	16
Healthy environment	18
Individual, family and community well-being	21
Health promotion and disease prevention	29
Emergency preparedness	39
Conclusion	42
Appendix A: Steering committee values	43
Appendix B: Community engagement	45

Acknowledgments

We extend our gratitude to all who supported and contributed to this state health improvement plan. Thousands of individuals from across the state answered surveys, participated in meetings and provided direct feedback to this work. We appreciate your input, collaboration and outreach. You helped make this plan a reality and ensured the plan was rooted in the health priorities of those who live and work in Oregon.

We look forward to implementing this plan together.

Steering Committee

This plan was developed by a committee from across Oregon, with representatives from community-based organizations, health care organizations, two of the Federally Recognized Tribes in Oregon, local public health authorities, community members and staff. Every member has contributed to a state assessment and plan.

Liberty Avila, MS, Executive Director, [Northeast Oregon Network](#)

Carrie Brogoitti, MPH, Director of Public Health, Center for Human Development; Public Health Administrator, [Union County](#)

Julia Brown, MA, Gerontology, Community Outreach and Engagement Manager, [AGE+](#)

Jolene Cawlfeld, RN, FNP, Harney District Hospital Board Director

Cheryl Carter, Community champion, engaged with committees focused on health equity, community health improvement planning, and homelessness

Mica Contreras, Executive Director, [Linn Benton Lincoln Health Equity Alliance](#)

Sokho Eath, JD, Director of the Immigrant and Refugee Community Organization's [Pacific Islander and Asian Family Center](#)

Taw "TJ" Foltz, BS, Health & Human Services General Manager, [Confederated Tribes of Warm Springs](#)

Jessica Hamner, MPH, Community Health and Family Services Manager, [Coquille Indian Tribe](#)

Christine Lee Kan, Community Health Manager, [HealthShare of Oregon](#)

Jacqueline Leung, JD, MS, Executive Director, [Micronesia Islander Community](#)

Elisabeth Maxwell, Ph.D, Prevention Supervisor, [Lane County](#)

Emily Mosites, Ph.D, MPH, Epidemiology Manager, [Multnomah County](#)

Alisha Overstreet, MS, Policy and Organizational Consultant, [LinkedIn](#)

Hannah Rarick, Community Health Worker, [Oregon Spinal Cord Injury Connection](#)

Lourdes Reyna Alcalá, MS, Community Health Development Director, [Eastern Oregon Coordinated Care Organization](#)

Dean Sidelinger, M.D., MEd, FAAP, State Health Officer and State Epidemiologist, [Oregon Health Authority](#)

Annie Valtierra Sanchez, Director, [So-Health-E](#)

Sadie Wade, Social Health Specialist, [Jackson Care Connect](#)

Whitney Watson, Policy Mode Lead, [Future Generations Collaborative](#)

Metropolitan Group steering committee facilitators

Debra Clark, Kristin Gimble and Kirsten Gunst

OHA staff participants

In addition to the staff named, we appreciate many OHA staff and leadership who contributed to priorities, strategies and measures for this plan.

Kaelin Amaya, MPH

Sara Beaudrault, MPH

Victoria Demchak, MRP

Danna Drum, MDiv

Rose L. Harding, MPH

Juanita Heimann, MPH

Veronica Herrera, MPH

Jose Mendez, PMP

Jameela Norton, MPH

Dulce Sanabria, BS

Dean Sidelinger, M.D., MEd, FAAP

Cintia Vimieiro, MGH

Letter from OHA Public Health Director

Dear Partners and Colleagues,

The 2025–2029 State Health Improvement Plan (SHIP) is a testament to the power of partners working together to advance health across Oregon. A steering committee of partners and community members accompanied by extensive public engagement guided the plan. It identifies the most important work for public health and the steps that Oregon Health Authority (OHA) will take in the coming years.

This SHIP has four priorities that reflect the core of our public health system and are influenced by social conditions and the changing needs of health throughout the lifespan. These are:

- healthy environments;
- individual, family and community well-being;
- health promotion and disease prevention; and
- emergency preparedness and response.

These priorities align with OHA's [Strategic Plan](#) and advance our agency's goal to eliminate health inequities for people in Oregon.

In an era marked by rapid changes and unforeseen challenges, this plan provides a roadmap for maintaining and improving public health. It emphasizes the importance of resilience and adaptability, equipping our public health system to respond effectively to emerging threats and changing needs.

At its heart, this plan is a commitment to fostering partnerships that bring people together to work toward shared goals. It recognizes the diverse experiences of Oregon's residents and strives to have inclusive strategies that benefit everyone, regardless of their background or location.

As we move forward, the SHIP will be our compass, guiding us through the complexities of the future while keeping us focused on our goal: a healthier, more connected Oregon.



Naomi Adeline-Biggs
Public Health Director, Oregon Health Authority

Executive summary

The Oregon Health Authority Public Health Division (OHA-PHD) conducted a state health assessment (SHA) and developed a state health improvement plan (SHIP) from 2023 to 2025. The SHIP is a plan that responds to health issues identified in the SHA by highlighting actions the public health system will take over the next five years.

Throughout this process, OHA-PHD relied on collaboration and community leadership. This process was guided by a steering committee of partners and community members who informed ongoing engagement with community groups, local public health authorities (LPHAs), Tribal representatives, coordinated care organizations (CCOs) and OHA-PHD staff.

The Steering Committee determined that the plan's approach would be universal, recognizing that public health works to improve the health of all people, of all ages, in all places. Using this approach, the Steering Committee recommended the following four priorities for Oregon's 2025–29 SHIP.

- **Healthy environments**

Public health supports healthy environments through investments, interventions, enforcement and education. It creates healthy environments by identifying and responding to environmental exposures such as lead; reducing the health impacts of extreme heat and wildfire smoke; reducing toxins in homes; and ensuring access to clean air and drinking water.

- **Individual, family and community well-being**

Public health promotes physical, mental and behavioral health for individuals, families and communities through primary prevention. Programs work to prevent overdose, sexual violence, community violence and deaths by suicide; support children, youth and families; and reduce use of alcohol, commercial tobacco and other drugs.

- **Health promotion and disease prevention**

Public health addresses health promotion and disease prevention over the lifespan by encouraging healthy behaviors, making health-promoting choices readily available and changing policies and systems that can impede health. These programs include vaccinations; connecting people to treatment for diseases like hepatitis C, tuberculosis and HIV; responding to disease outbreaks; and supporting behavior change for health.

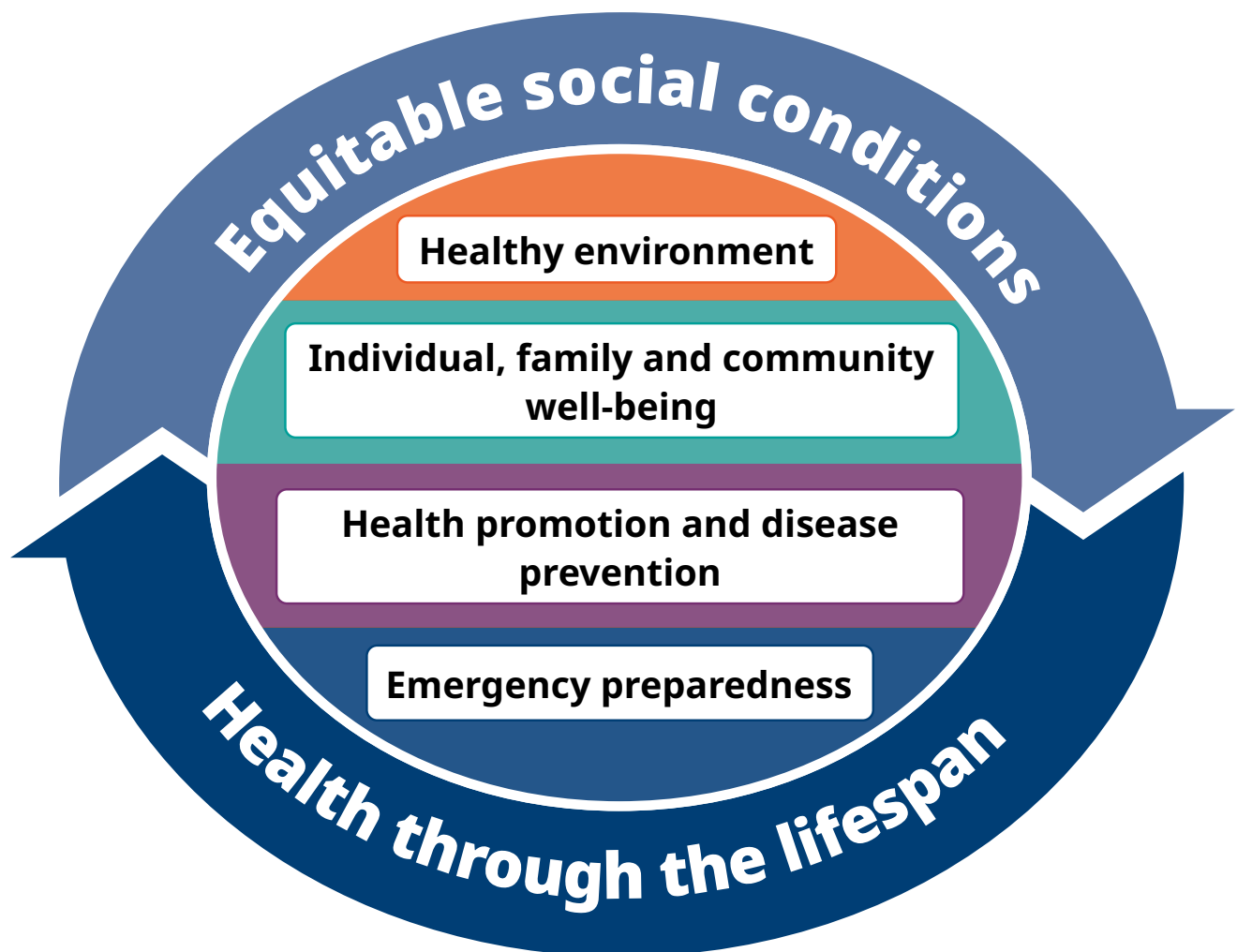
- **Emergency preparedness and response**

Public health protects health when emergencies occur by working with partners to develop regional preparedness plans; responding to health threats; and providing regional and statewide support for health care, the Nine Federally Recognized Tribes in Oregon (Tribes in Oregon) and local public health authorities to track diseases and provide health services.

OHA-PHD will use the SHIP to align resources across initiatives, including the agency strategic plan. Each priority includes strategies that address people’s different access to community resources and changing health needs for all ages.

OHA-PHD is committed to taking action in the four priority areas to improve health. OHA-PHD will regularly track and report on progress and identify areas where progress is not being made. This [information will be shared with partners and community members](#) through regular reporting.

Figure 1. SHIP priorities



Guiding values

This SHIP was developed using the Steering Committee's mission and vision. These served to provide direction while developing the priorities and strategies in this plan.

Vision

Each person living in Oregon can obtain affordable, appropriate and adequate resources that they need to reach optimal health and well-being.

Mission

We draw on community voices, experiences, and ideas to shape state health focus areas and solutions so that all people living in Oregon have the resources and opportunities to thrive. It is important to recognize the government-to-government relationship between the state of Oregon and the Nine Federally Recognized Tribes in honoring Tribal sovereignty and the role Tribes play in improving health in Tribal communities.

Introduction and background

The SHIP describes health priorities for people in Oregon and the work of the public health system to address each priority. The priorities address areas for health improvement identified in the [2025 State Health Assessment](#)^{*}. OHA-PHD leads the SHA and SHIP efforts within OHA, developing the plan and working with partners.

Together with the SHA, the SHIP is required for public health accreditation, but the SHIP goes beyond compliance. Its aim is to be a community-developed driver of health improvement across the state.[†]

This report includes the following elements:

- **Priorities:** The most important health topics through 2029, where OHA-PHD will lead and partner with others.
- **Objectives:** The specific, measurable goals for each priority.
- **Strategies:** How the governmental public health system and partners will address these priorities.
- **Ongoing tracking:** How OHA-PHD will track and share information on progress and health improvement.

Background: Oregon health improvement

Oregon's SHIP is a guiding plan for OHA-PHD's work to assess and improve health in Oregon. It acts to synthesize input, map priorities and bring attention and resources to the most important health issues for people in Oregon.

Other state plans and assessments

This SHIP responds to the conditions and health information collected in the 2025 SHA. The SHA gathered information about Oregon's public health system and its capacity, the health and demographics of people in Oregon, and lessons learned from the previous SHIP process.

Oregon's public health modernization (Modernization[‡]) is a long-term change process for providing core public health services and protections for all people

* The State Health Assessment for 2025's page is here: <https://www.oregon.gov/oha/PH/ABOUT/Pages/state-health-assessment.aspx>; pdf is here: https://www.oregon.gov/oha/PH/ABOUT/SHAMeetingDocuments/State%20Health%20Assessment_FINAL.pdf

† The Public Health Accreditation Board (PHAB) develops accreditation requirements for public health agencies: <https://phaboard.org/>

‡ Oregon's public health modernization is a framework for public health improvement: <https://www.oregon.gov/oha/ph/about/taskforce/pages/index.aspx>.

in Oregon. Modernization ensures a strong, resilient and community-centered system that can fulfill the goals, priorities and strategies in this plan as well as in corresponding community health improvement plans. Oregon uses accountability metrics to track health improvements occurring through Modernization. Some SHIP objectives and measures align with Modernization accountability metrics, including those related to childhood vaccinations and heat related emergency department and urgent care visits.

The SHIP uplifts OHA's vision to eliminate health inequities by 2030 by aligning with OHA's Strategic Plan*. The Strategic Plan sets an intention in OHA's work, systems and policies to move toward this vision. The SHIP priorities and objectives support work identified in the agency strategic plan. To demonstrate alignment across existing plans, many strategies include links to state plan documents.

Assets and resources

OHA-PHD recognizes that health improvement depends on coordinated activities across governmental public health and partners, a well-trained public health workforce, and sufficient staffing and resources to advance public health work. OHA-PHD grounded the SHIP priorities and strategies in feasible activities to coordinate partners across the public health system, support the public health workforce and improve access to health supporting services and data.

OHA-PHD monitors current capacity, assets and resources through the following ongoing assessments and plans.

- Biannual evaluation of public health modernization investments and improvements;†
- A 2025 public health system workforce plan, collaboratively developed with educational partners, community-based organizations, Tribes in Oregon, LPHAs and OHA-PHD staff along with Oregon's Public Health Advisory Board;‡ and
- A state requirement for coordinated care organizations to develop community health improvement plans (CHIPs) that have at least two aligned strategies with the SHIP.§

* OHA's strategic plan is part of a broader agency plan, Oregon Health Forward. <https://www.oregon.gov/oha/oregonhealthforward/pages/index.aspx>.

† 2023-2025 OHA Public Health Modernization Evaluation. https://www.oregon.gov/oha/PH/ABOUT/TASKFORCE/Documents/PHM_Evaluation-Report_WEB.pdf

‡ Oregon's Public Health System Workforce Plan. <https://www.oregon.gov/oha/PH/ABOUT/Documents/PHS%20Workforce%20Plan%20FINAL%20approved%207.10.2025.pdf>.

§ This requirement is in Oregon Administrative Rule, OAR 410-141-3730.

OHA-PHD will continue to build from these existing assets and resources to deepen partnerships and support flexible and responsive methods to advance shared objectives.

As OHA-PHD implements this plan through 2029, OHA-PHD will establish methods for community members and partners to receive updates on state health improvement activities through the upcoming SHIP Collaborative. OHA-PHD will also provide technical assistance for local coordination with state activities, advancing the state's ability to support local Tribal and CCO health improvement.

Health disparities and health equity

This plan considers health improvement in the wider context of advancing health equity for people who live and work in Oregon. The conditions in which people live influence health across the course of their lives. Issues like lack of access to health care are complex and cannot be attributed to stand-alone factors like having or lacking health insurance. Programmatic efforts to improve people's health must be based on a comprehensive understanding of which barriers to improved health exist in different people's lives and how those barriers interact with and influence individual health behaviors and outcomes.

The priorities and strategies in this plan are designed to improve health outcomes for all individuals through focused actions and fundamental public health work to support those who live and work in Oregon. The SHA includes detailed information about health disparities across 26 population health indicators. The indicator reports in the SHA include context on health outcomes in different groups of people and some factors that can improve health. Some of those factors and activities are echoed in the strategies that follow.

Development process

The Steering Committee provided direction and inspiration for the SHIP. Early on, it was important to define the primary roles of the SHIP in state policy and decision-making. OHA-PHD uses the SHIP to guide programs, strategies and resources. CCOs are required to align two strategies within their community health improvement plans with SHIP strategies. OHA-PHD uses the SHIP to influence and build alignment across sectors and agencies with shared areas of interest or action, including education, health care and behavioral health. Each of these levers are used to build action toward shared goals.

Developing priorities

The Steering Committee emphasized the values of transparency, equity, accountability, and collaboration to improve the lives of people who live in Oregon.*

The Steering Committee guided OHA-PHD to focus on:

- Lessons learned from Oregon’s previous 2020–24 SHIP, Healthier Together Oregon†
- Current public health programs and resourced initiatives to identify areas of current work; and
- The scope of the public health system in Oregon and a realistic approach for what the system can accomplish through 2029.

Priorities were developed through an iterative process that gathered feedback from Steering Committee members, community groups across the state,‡ Tribal communities, staff from LPHAs and CCOs, and staff from OHA and other state agencies. Individuals and groups were asked to select their most important priorities and state why they had chosen those priorities. OHA-PHD used four methods to gather this feedback:

- **Community presentations:** Staff presented in more than 35 external meetings across Oregon including community specific venues, CCO community spaces and other local meetings. These spaces ranged from online 30-minute meetings to full day meetings in Coos Bay, Salem, Portland and Pendleton. Participants provided verbal and written feedback highlighting interests and priorities.
- **Partner, staff and Tribal engagement:** Engagement focused on meeting spaces for organizations that have responsibilities for health improvement within their communities. This included meetings with Tribal representatives, LPHAs, CCO staff, and the Oregon Public Health Advisory Board to provide updates and invite input to help determine priorities.
- **Survey:** Every community presentation or partner and staff engagement opportunity was followed by a survey that allowed attendees to share information about their priorities and experiences. The survey was also shared through other email distribution lists. The survey was available in English and Spanish languages. OHA received 154 responses on the English language survey and 0 respondents on the Spanish language survey.
- **Funded partners:** OHA worked with eleven community based organization to engage with their community members to gather feedback on proposed

* The Steering Committee’s values are in Appendix A.

† This is the state health improvement plan from 2020–2024. Refer to Starting Point Assessment in the 2025 State Health Assessment.

‡ A full list of community engagement can be found in Appendix B.

Strategies

Strategies for the SHIP are designed to be attainable, measurable and resourced. They include activities that the governmental public health system could achieve, in coordination with partners. SHIP Core Team staff and the Steering Committee designed the following criteria to select strategies. These strategies should be:

- Measurable
- Developed with input from public engagement and/or partners
- Work that public health is already doing, plans to do, or could do by the end of 2029
- Advance health equity
- Led with or by state public health, either directly or through influencing the work of other partners or sectors
- Aligned with priority areas
- Evidence-based
- Workable in Eastern Oregon and/or rural and remote areas
- Include strategies for different age ranges

The SHIP Core Team solicited eligible strategies from OHA-PHD programs. Strategies were then reviewed by the SHIP Core Team to ensure that the criteria were met and worked with program staff to finalize strategies in September 2025.

Objectives and measures

The SHIP Core Team worked with OHA-PHD staff to determine objectives and measures for each priority that align with state population health indicators, OHA strategic plan metrics and public health accountability metrics.

Tracking and accountability

Through 2029, OHA-PHD will regularly track and report on progress toward priorities, objectives and strategies. The SHIP Core Team is responsible for tracking and reporting progress in partnership with Public Health Division program staff. The Core Team also works to strengthen connections across OHA programs whose work advances the priorities and strategies in this plan.

OHA-PHD will publish occasional updates and an annual progress report. In addition, public online dashboards for SHIP objectives will be updated annually. OHA-PHD will provide regular updates of progress, barriers and opportunities to Oregon's Public Health Advisory Board.

Priorities and Oregon's actions

The Steering Committee determined that the SHIP would be universal, recognizing that public health works to improve the health of all people, in all places and of all ages. Using this framework, the Steering Committee recommended four priorities for Oregon's 2025-29 SHIP. These priorities bring attention to the ways that public health initiatives can improve health

Improving health through this plan is made possible through collaboration with a diverse and growing network of partners. The foundation of this work is sustained partnership and mutual engagement within the governmental public health system, including state public health, LPHAs and the Nine Federally Recognized Tribes in Oregon. OHA is committed to continuously expanding partnerships and deepening relationships in service to improving health for people in Oregon. The partnerships listed in the following sections may not reflect the full suite of current partners.

How to read the strategies that follow

The four priority areas are:

- **Healthy environments**

Public health supports healthy environments through investments, interventions, enforcement and education. It creates healthy environments by identifying and responding to environmental exposures such as lead; reducing the health impacts of extreme heat and wildfire smoke; reducing toxins in homes; and ensuring access to clean air and drinking water.

- **Individual, family and community well-being**

Public health promotes physical, mental and behavioral health for individuals, families and communities through primary prevention. Programs work to prevent overdose, sexual violence, community violence and deaths by suicide; support children, youth and families; and reduce use of alcohol, commercial tobacco and other drugs.

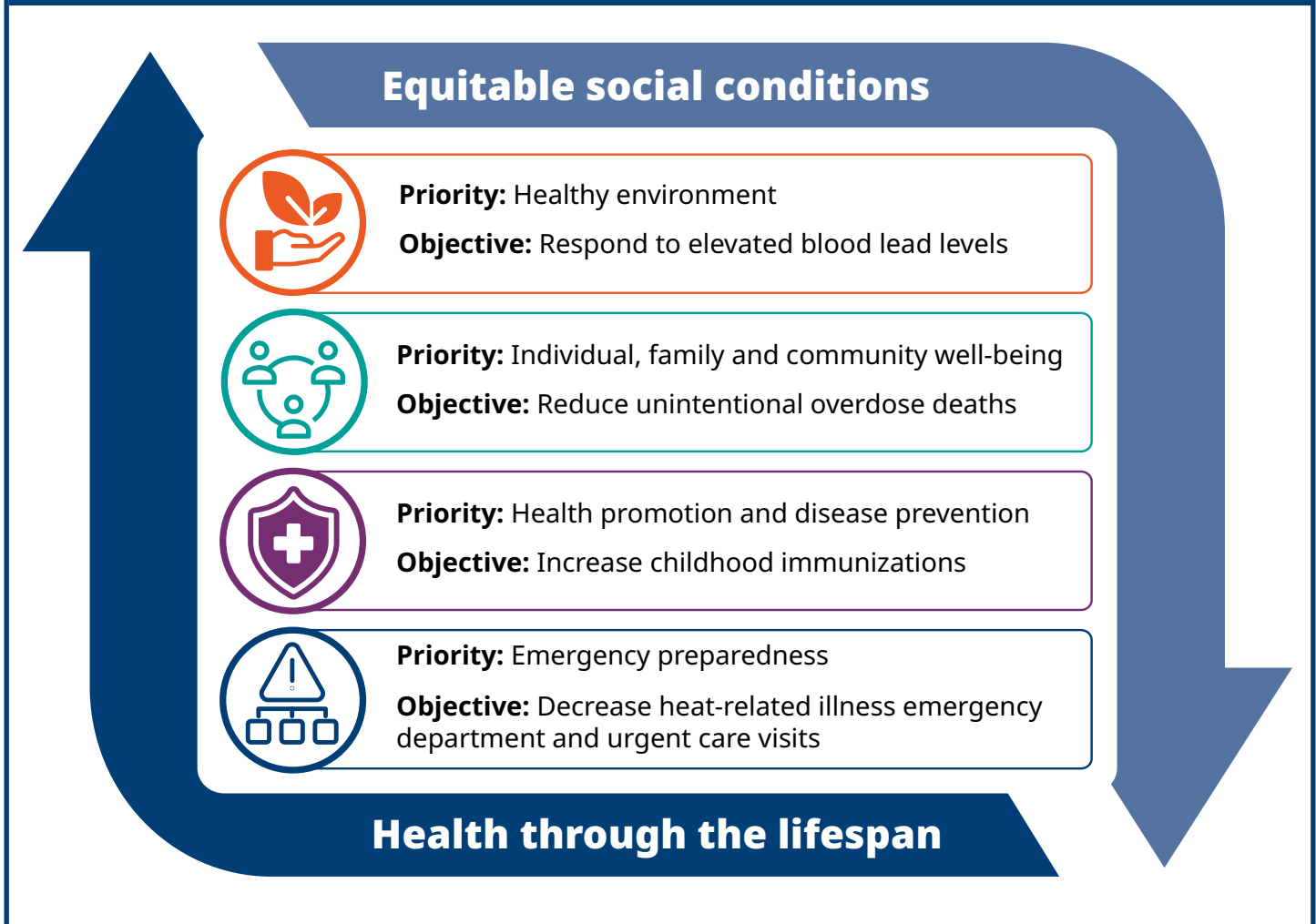
- **Health promotion and disease prevention**

Public health addresses health promotion and disease prevention over the lifespan by encouraging healthy behaviors, making health-promoting choices readily available and changing policies and systems that can impede health. These programs include vaccinations; connecting people to treatment for diseases like hepatitis C, tuberculosis and HIV; responding to disease outbreaks; and supporting behavior change for health.

- **Emergency preparedness and response**

Public health protects health when emergencies occur by working with partners to develop regional preparedness plans; responding to health threats; and providing regional and statewide support for health care, Tribes in Oregon and local public health authorities to track diseases and provide health services.

Figure 3. SHIP priorities and objectives



In the following sections, each priority is further described, followed by the primary objective, measure and a list of strategies. Although each strategy is listed under a single priority, many strategies align with multiple priorities.

Each strategy includes:

- The OHA Public Health Division section leading the work.
- Current partners in advancing the strategy.
- Indicators about whether this strategy invests in public health data.
- Aligned public-facing plans, including links.



Healthy environment

The public health system has a critical role to play in supporting a healthy environment for Oregon residents through investments, interventions, enforcement and education. Public health promotes healthy environments by reducing health impacts of extreme heat and wildfire smoke; identifying and responding to environmental risks such as lead exposures in children; reducing toxins in homes; and ensuring access to clean air and drinking water.

Objective: Respond to elevated blood lead levels

Objective: Identify probable lead exposure sources for elevated blood lead level cases among children.

Baseline: 77% (2024)

2029 goal: 88%

Data source: Lead Poisoning Prevention Program

Strategies

1. Case investigations for elevated blood lead levels

Coordinate trainings or meetings for LPHA case managers to increase case investigation capacity for children with elevated blood lead levels.

- **Lead PHD Section:** Environmental Public Health
- **Current partners:** LPHAs, coordinated care organizations and health care organizations and state agencies.
- **Plan alignment:** [OHA strategic plan](#), lead screening in children metric.

2. Protection from environmental hazards

Implement plans and strategies that help people protect themselves from excessive heat, wildfire smoke and other climate change-driven environmental hazards.

- **Lead PHD Section:** Environmental Public Health
- **Current partners:** Community-based organizations, Tribes in Oregon and LPHAs.

- **Plan alignment:**
 - OHA strategic plan. <https://www.oregon.gov/oha/pages/strategic-plan.aspx>
 - Executive Order 20-04. <https://www.oregon.gov/puc/utilities/pages/executiveorder20-04.aspx>
 - Public health accountability metrics. <https://www.oregon.gov/oha/ph/about/pages/accountabilitymetrics.aspx>

3. Climate hazard information for improved planning

Provide data and information about health risks from climate hazards to local partners so they can prepare and carry out action plans to lessen these impacts.

- **Lead Section:** Environmental Public Health
- **Current partners:** Community-based organizations, Tribes in Oregon, LPHAs and state agencies.
- **Public health data investments:** Yes
- **Plan alignment:**
 - Public health accountability metrics. <https://www.oregon.gov/oha/ph/about/pages/accountabilitymetrics.aspx>

4. Reduce health impacts from climate hazards*

Reduce community health impacts from wildfire smoke and heat by funding partners to implement healthy home interventions, such as weatherization and air filtration, and using culturally and socially specific community engagement practices.

- **Lead PHD Section:** Environmental Public Health
- **Current partners:** Community-based organizations, Tribes in Oregon and Healthy Homes Grant Program Advisor Network.

5. Safe drinking water systems

Ensure safe drinking water for people served by small public water systems challenged with operating their systems effectively by providing technical and financial assistance.

- **Lead PHD Section:** Drinking Water Services

* This strategy is listed again under the Emergency Preparedness priority.

- **Current partners:** Oregon Water Resources Department, Oregon Environmental Laboratory Accreditation Program accredited labs, Oregon Department of Agriculture; local public health authorities, and municipalities.
- **Plan alignment:**
 - Environmental Protection Agency initiative to address systemic issues at water systems. <https://www.epa.gov/enforcement/national-enforcement-and-compliance-initiative-increasing-compliance-drinking-water>

6. Smokefree air

Protect the health of individuals and communities by strengthening policies that reduce and eliminate exposure to smoke and aerosol from commercial tobacco and cannabis.

- **Lead PHD Section:** Health Promotion and Chronic Disease Prevention
- **Current partners:** CCOs and health systems; community-based organizations, Tribes in Oregon, health care providers, LPHAs, Regional Health Equity Coalitions and state agencies.
- **Plan alignment:**
 - HPCDP strategic plan. <https://www.oregon.gov/oha/PH/DISEASES/CONDITIONS/CHRONICDISEASE/Documents/hpcdp-strategic-plan.pdf>
 - Oregon Indoor Clean Air Act. <https://www.oregon.gov/oha/ph/preventionwellness/tobaccoprevention/smokefreeworkplacelaw/pages/index.aspx>



Individual, family and community well-being

Oregon's public health system promotes physical, mental and behavioral health for individuals, families and communities through primary prevention. Public health programs work to prevent overdose, sexual violence, community violence and deaths by suicide; support children, youth and families through programs that include early home visiting and positive youth development; reduce use of alcohol, nicotine and other drugs; and invest in community-led solutions to create well-being.

Objective: Reduce unintentional overdose deaths

Objective: Reduce unintentional overdose death by 8% in 2029 from baseline.

Baseline: 1,761 (2023)

2029 goal: 8% reduction to 1,620

Data source: Statewide Unintentional Drug Overdose Reporting System (SUDORS)

Strategies

1. Overdose prevention

Reduce overdoses through collaborative, culturally appropriate, data-driven prevention initiatives that address stigma, support resilience and promote equity. Manage, review and share overdose data to inform prevention approaches.

- **Lead PHD Section:** Injury and Violence Prevention
- **Current partners:** CCOs and health systems, community-based organizations, Tribes in Oregon, health care providers, LPHAs, Regional Health Equity Coalitions, schools, Head Start programs, education partners, state agencies and public safety partners.
- **Public health data investments:** Yes
- **Plan alignment:**
 - Alcohol & Drug Policy Commission 2020-2025 Statewide Strategic Plan: [https://www.oregon.gov/adpc/SiteAssets/Pages/index/Statewide%20Strategic%20Plan%20Final%20\(1\).pdf](https://www.oregon.gov/adpc/SiteAssets/Pages/index/Statewide%20Strategic%20Plan%20Final%20(1).pdf)
 - Oregon Health Authority 2024-2027 Strategic Plan: <https://sharedsystems.dhsoha.state.or.us/DHSForms/Served/le-609702.pdf>
 - CDC Overdose Data to Action in States: <https://www.cdc.gov/overdose-prevention/php/od2a/state.html>

2. Suicide prevention

Prevent suicide among people of all ages through equitable and culturally infused prevention approaches for disproportionately affected populations including youth of color, service members, veterans and their families, people with access to firearms and older adults in rural areas. Manage and share timely, accessible suicide data.

- **Lead PHD Section:** Injury and Violence Prevention
- **Current partners:** CCCOs and health systems, community-based organizations, Tribes in Oregon, health care providers, LPHAs, Regional Health Equity Coalitions, schools, Head Start programs, education partners and state agencies.
- **Public health data investments:** Yes
- Plan alignment:
 - Youth Suicide Intervention & Prevention Plan (YSIPP). <https://www.oregon.gov/oha/PH/PREVENTIONWELLNESS/SAFELIVING/SUICIDEPREVENTION/Documents/21-25-youth-suicide-prevention-plan.pdf>
 - Adult Suicide Intervention & Prevention Plan (ASIPP). <https://www.oregon.gov/oha/PH/PREVENTIONWELLNESS/SAFELIVING/SUICIDEPREVENTION/Documents/Adult%20Suicide%20Intervention%20and%20Prevention%20Plan%202023-2027.pdf>
 - Oregon Suicide Prevention Framework. <https://sharedsystems.dhsoha.state.or.us/DHSForms/Served/le3636b.pdf>

3. Community programs to reduce violence

Reduce community violence (including firearm injuries and deaths) by supporting credible violence prevention leaders, funding local programs, building partnerships and sharing timely, accessible data.

- **Lead PHD Section:** Injury and Violence Prevention
- **Current partners:** CCOs and health systems, community-based organizations, Tribes in Oregon, health care providers, LPHAs, Regional Health Equity Coalitions, schools, Head Start programs, education partners and state agencies.

4. Postpartum care

Work with partners to improve rates of postpartum care visits and support Oregon families throughout the postpartum period.

- **Lead PHD Section:** Family and Child Health

- **Current partners:** CCOs, health systems, community-based organizations, Tribes in Oregon, health care providers, LPHAs and state agencies.
- **Public health data investments:** Yes
- **Plan alignment:**
 - Title V Block Grant. <https://www.oregon.gov/oha/PH/HealthyPeopleFamilies/DataReports/MCHTitleV/Pages/>

5. Early home visiting

Increase access to early childhood home visiting programs statewide.

- **Lead PHD Section:** Family and Child Health
- **Current partners:** CCOs and health systems, community-based organizations, Tribes in Oregon, health care providers, LPHAs, state agencies, schools, Head Start facilities and education partners.
- **Plan alignment:**
 - Raise Up Oregon, Department of Early Learning Care. https://www.oregon.gov/delc/about-us/RUO_Documents/Raise_Up_Oregon-WEB-1117
 - Center for Coordinating Oregon’s Home Visiting Systems (CCOHVS) work plans and research. <https://sites.google.com/pdx.edu/ohvscc/home>

6. Reducing sexual violence among youth

Prevent sexual violence by funding and supporting a task force to work with youth and promote safe, healthy relationships. Provide training and technical help to schools and youth groups during the critical time when relationship norms are forming.

- **Lead PHD Section:** Family and Child Health
- **Current partners:** Community-based organizations, Tribes in Oregon, LPHAs, schools and education partners, state agencies, Oregon Department of Justice, Oregon Department of Human Services and statewide nonprofits and coalitions, including the Oregon Coalition Against Domestic and Sexual Violence and Oregon Sexual Assault Task Force.
- **Plan alignment:**
 - CDC STOP Sexual Violence Technical Package. <https://static1.squarespace.com/static/633f2a40ed34f47be5f34fb1/t/6410e5b3dc8aae4594f17b9b/1678828984264/sv-prevention-technical-package.pdf>

- Oregon Rape Prevention and Education (RPE) Work Plan 2025-2026 Oregon RPE State Action Plan Oregon RPE Evaluation Plan Oregon Youth Sexual Health Plan. https://www.oregon.gov/oha/PH/HEALTHYPEOPLEFAMILIES/YOUTH/YOUTHSEXUALHEALTH/Documents/YSH%20One%20Pagers_Combined.pdf

7. Youth leadership

Implement a Positive Youth Development (PYD) framework to support youth leadership programs in communities and help young people build leadership skills by creating opportunities and fostering positive relationships.

- **Lead PHD Section:** Adolescent Health, Screenwise & Reproductive Health
- **Current partners:** CCOs and health systems, community-based organizations, health care providers, LPHAs, schools, education partners, state agencies and school-based health centers.

8. Behavioral health services to children, youth and families

Provide behavioral health services and support to children, youth, and families in places they trust and feel comfortable, offering help for different levels of need.

- **Lead PHD Section:** Adolescent Health, Screenwise & Reproductive Health
- **Current partners:** CCOs and health systems, community-based organizations, Tribes in Oregon, health care providers, LPHAs, Regional Health Equity Coalitions, schools, Head Start programs, education partners, state agencies, SBHC medical sponsors and behavioral health agencies, OHA Child and Family Behavioral Health Program and community mental health programs.
- **Plan alignment:**
 - OHA School Based Health Centers Program Modernization. <https://www.oregon.gov/oha/ph/healthypeoplefamilies/youth/healthschool/schoolbasedhealthcenters/pages/certification.aspx>
 - OHA Strategic Plan: Strengthening access to affordable care for all; Fostering health families and environments; Transforming behavioral health. <https://www.oregon.gov/oha/pages/strategic-plan.aspx>
 - OHA Youth Suicide Intervention and Prevention Plan (YSIPP). <https://oregonalliancetopreventsuicide.org/ysipp-21-25/>

9. Understanding and communicating data on youth

Increase participation and utilization of population data through the Student

Health Survey and surveys of school health systems. Expand data dashboards to share survey population data with local partners.

- **Lead PHD Section:** Adolescent Health, Screenwise & Reproductive Health
- **Current partners:** Community-based organizations, LPHAs, schools, Head Start programs, education partners and state agencies.
- **Public health data investments:** Yes

10. Data collection capacity with community-based organizations

Elevate novel methods for building data collection capacity with community-based organizations and LPHA partners.

- **Lead PHD Section:** Health Promotion and Chronic Disease Prevention
- **Current partners:** Community-based organizations, LPHAs and regional health equity coalitions.
- **Public health data investments:** Yes

11. Reduce excessive alcohol consumption

Reduce excessive alcohol use across the lifespan through data-driven primary prevention programs and proven public health strategies to reduce alcohol's harmful effects to individuals and communities. Partner with local organizations and state agencies to implement prevention programs, initiatives or policies in local communities.

- **Lead PHD Section:** Health Promotion and Chronic Disease Prevention
- **Current partners:** Community-based organizations, Regional Health Equity Coalitions, LPHAs and state agencies, including the Alcohol and Drug Policy Commission, Oregon Liquor and Cannabis Commission.
- **Plan alignment:**
 - HPCDP Strategic Plan 2017-2025. <https://www.oregon.gov/oha/PH/DISEASES/CONDITIONS/CHRONICDISEASE/Documents/hpcdp-strategic-plan.pdf>
 - Alcohol and Drug Policy Commission Strategic plan. [https://www.oregon.gov/adpc/SiteAssets/Pages/index/Statewide%20Strategic%20Plan%20Final%20\(1\).pdf](https://www.oregon.gov/adpc/SiteAssets/Pages/index/Statewide%20Strategic%20Plan%20Final%20(1).pdf)

12. Connected, age-friendly communities

Work with communities to support them in becoming age-friendly communities where people can access clean air, nutritious food, daily activity, social connections and support when needed.

- **Lead PHD Section:** Health Promotion and Chronic Disease Prevention
- **Current partners:** CCOs and health systems, community-based organizations, Tribes in Oregon and health care providers.
- **Plan alignment:**
 - HPCDP Strategic Plan State Plan. <https://www.oregon.gov/oha/PH/DISEASES/CONDITIONS/CHRONICDISEASE/Documents/hpcdp-strategic-plan.pdf>
 - State Plan to Address Alzheimer’s Disease and Related Dementias. https://act.alz.org/site/DocServer/SPADO_Report.pdf

13. Culturally responsive options for healing and wellness

Destigmatize the use of psilocybin as a culturally responsive option for healing and wellness.

- **Lead PHD Section:** Oregon Psilocybin Services
- **Current partners:** CCOs and health systems, community-based organizations, Tribes in Oregon, health care providers, LPHAs, Regional Health Equity Coalitions, schools, Head Start programs, education partners, state agencies, academic partners, regulated community members, advocates and associations.
- **Plan alignment:**
 - Oregon Psilocybin Services Section Strategic Plan. <https://www.oregon.gov/oha/PH/PREVENTIONWELLNESS/Pages/Psilocybin-OPS-Section-Strategic-Plan.aspx>

14. Timely and accurate statistics on births and deaths

Provide timely and accurate statistics and information on births and deaths for public health programs, partners and communities.

- **Lead PHD Section:** Center for Health Statistics
- **Current partners:** CCOs and health systems, health care providers, state agencies, funeral homes, midwives and medical examiners.
- **Public health data investments:** Yes
- **Plan alignment:**
 - Forecast Center for Health Statistics Brief- July 24, 2024. <https://www.oregon.gov/oha/PH/BIRTHDEATHCERTIFICATES/VITALSTATISTICS/ANNUALREPORTS/Pages/index.aspx>

15. Timely registration of vital records

Provide timely registration of vital events through collaboration with partners in health care, medical examiners, midwives, funeral homes and other state agencies.

- **Lead PHD Section:** Center for Health Statistics
- **Current partners:** CCOs and health systems, health care providers, state agencies, funeral homes, midwives, medical examiners.
- **Public health data investments:** Yes
- **Plan alignment:**
 - Forecast Center for Health Statistics Brief- July 24, 2024; data homepage. <https://www.oregon.gov/oha/PH/BIRTHDEATHCERTIFICATES/VITALSTATISTICS/ANNUALREPORTS/Pages/index.aspx>

16. Timely access to vital records

Make sure people and families can get certified copies of vital records quickly like birth, death, marriage and divorce certificates.

- **Lead PHD Section:** Center for Health Statistics
- **Current partners:** LPHAs
- **Public health data investments:** Yes

17. Community data investments

Advance data equity, data justice and community-led data.

- **Lead PHD Section:** Policy & Partnerships
- **Current partners:** Community-based organizations, Tribes in Oregon, LPHAs and Regional Health Equity Coalitions.
- **Public health data investments:** Yes
- **Plan alignment:**
 - Public Health Advisory Board's Strategic Data Plan. https://www.oregon.gov/oha/PH/ABOUT/Documents/phab/PHAB%20SDP%20data%20recommendations_final_11.9.23.pdf

18. Public health priorities for people with disabilities

Work directly with the disability community and other communities, recognizing the diversity and intersectionality within communities, to identify

community health priorities, align public health initiatives and promote health equity using community strengths.

- **Lead PHD Section:** Partnerships for Community Health Program
- **Current partners:** Community-based organizations and state agencies.
- **Plan alignment:**
 - OHA Strategic Plan. <https://www.oregon.gov/oha/pages/strategic-plan.aspx>

19. Network of community-based organizations in public health

Develop and sustain a statewide network of community-based organizations through community investments.

- **Lead PHD Section:** Partnerships for Community Health Program
- **Current partners:** Tribes in Oregon, LPHAs and community-based organizations.
- **Plan alignment:**
 - Public Health Modernization Plan. <https://www.oregon.gov/oha/ph/About/TaskForce/Documents/statewidemodernizationplan.pdf>

20. Community capacity for public health

Advance equitable public health outcomes through community-led capacity building, inclusive engagement and systems alignment.

- **Lead PHD Section:** Partnerships for Community Health Program
- **Current partners:** Community-based organizations, LPHAs and state agencies.

21. OHA infrastructure to support communities affected by health disparities

Strengthen the internal infrastructure of OHA-PHD to embed equity across all programs and services ensuring that health interventions are inclusive, culturally responsive and designed to meet the needs of communities most impacted by health disparities.

- **Lead PHD Section:** Partnerships for Community Health Program
- **Current partners:** Tribes in Oregon and LPHAs.
- **Plan alignment:**
 - Public Health Modernization Plan. <https://www.oregon.gov/oha/ph/About/TaskForce/Documents/statewidemodernizationplan.pdf>

22. Gender-affirming care

Improve health care outcomes for transgender, non-binary, gender-diverse people, youth, immigrant communities, rural residents and other community members, recognizing the diversity and intersectionality within all communities, by working together across many sectors to provide training, resources and advocacy in support of gender-affirming care.

- **Lead PHD Section:** Partnerships for Community Health Program
- **Current partners:** Community-based organizations, health care providers LPHAs and state agencies.



Health promotion and disease prevention

The public health system works to keep people healthy and address social determinants of health through programs that promote health and prevent illness and disease. Public health does this by promoting healthy behaviors, increasing disease surveillance and improving community health through preventive services, policies and systems change. Examples include work to increase vaccinations; treat hepatitis C, tuberculosis and HIV; prevent cases of syphilis in infants; respond to disease outbreaks; increase access to healthy foods and programs to manage chronic health conditions and quit nicotine; and reduce falls among older adults.

Objective: Childhood immunizations

Objective: Increase rate of 2-year-olds who complete child vaccination series to 78.5%.

Baseline: 68.4% (2024)

2029 goal: 78.5%

Data source: ALERT Immunization Information System

Strategies

1. Vaccine access and vaccine communication

Make vaccines easier to get and increase public confidence in vaccines.

- **Lead PHD Section:** Immunization
- **Current partners:** LPHAs, Tribes in Oregon, community-based organizations, CCOs and health systems, Regional Health Equity Coalitions and health care providers.
- **Plan alignment:**
 - PHAB Public Health Accountability Metrics. <https://www.oregon.gov/OHA/PH/ABOUT/Pages/AccountabilityMetrics.aspx>
 - OHA strategic plan. <https://www.oregon.gov/oha/pages/strategic-plan.aspx>

2. Vaccination system improvements

Make it easier for health care providers to give vaccines by building a stronger, more reliable purchasing and payment system.

- **Lead PHD Section:** Immunization
- **Current partners:** LPHAs, Tribes in Oregon, community-based organizations, state agencies, CCOs and health systems, health care providers, pharmaceutical companies and advocacy organizations.
- **Plan alignment:**
 - PHAB Public Health Accountability Metrics. <https://www.oregon.gov/OHA/PH/ABOUT/Pages/AccountabilityMetrics.aspx>

3. Vaccination quality improvement

Increase the percentage of providers participating in the IQIP program.

- **Lead PHD Section:** Immunization
- **Current partners:** LPHAs, CCOs and health systems, health care providers.
- **Plan alignment:**
 - PHAB Public Health Accountability Metrics. <https://www.oregon.gov/OHA/PH/ABOUT/Pages/AccountabilityMetrics.aspx>
 - OHA strategic plan. <https://www.oregon.gov/oha/pages/strategic-plan.aspx>

4. Data to view disease outbreak risks

Develop and utilize statewide and local data dashboards to identify key populations at risk for vaccine preventable disease outbreaks and make data available to partners and communities.

- **Lead PHD Section:** Immunization
- **Current partners:** LPHAs, Tribes in Oregon, community-based organizations, CCOs and health systems, Regional Health Equity Coalitions, schools, Head Start programs and education partners.
- **Public health data investments:** Yes
- **Plan alignment:**
 - PHAB Public Health Accountability Metrics. <https://www.oregon.gov/OHA/PH/ABOUT/Pages/AccountabilityMetrics.aspx>
 - OHA strategic plan. <https://www.oregon.gov/oha/pages/strategic-plan.aspx>

5. Access to hepatitis C care and treatment

Increase the number of people linked to care for hepatitis C by promoting the use of peer recovery specialists or peer navigators.

- **Lead PHD Section:** Acute and Communicable Disease Prevention
- **Current partners:** LPHAs, community-based organizations, state agencies, health care providers, peer support programs, including PATHS and PRIME+.
- **Plan alignment:**
 - [Oregon Viral Hepatitis Elimination Plan](#)

6. Vaccine preventable illnesses and conditions

Prevent serious, long-term infections and cancers through screening, vaccination and treatment. Focus on protecting pregnant people and babies from infections like Hepatitis B, pertussis, RSV and group B strep.

- **Lead PHD Section:** Acute and Communicable Disease Prevention
- **Current partners:** Community-based organizations and health care providers.
- **Plan alignment:**
 - OHA's Public Health Accountability Metrics. <https://www.oregon.gov/OHA/PH/ABOUT/Pages/AccountabilityMetrics.aspx>

7. Communicable disease prevention

Improve communicable disease prevention by making timely, complete and useful data available through modern data systems and strong partnerships across sectors.

- **Lead PHD Section:** Acute and Communicable Disease Prevention
- **Current partners:** LPHAs, Tribes in Oregon, CCOs, health systems, health care providers, laboratories.
- **Public health data investments:** Yes

8. Congenital syphilis prevention

Ensure pregnant people are screened and treated to prevent congenital syphilis.

- **Lead PHD Section:** HIV, STD, and TB
- **Current partners:** LPHAs, Tribes in Oregon, community-based organizations, state agencies.

- **Plan alignment:**
 - EndHIV/STI Oregon Strategic Plan. https://www.endhivoregon.org/wp-content/uploads/2023/08/OHA_EndHIVOregon_5-year-strategy-1.pdf

9. Sexually transmitted infection investigations

Provide case investigation and partner services for priority cases of HIV, syphilis and gonorrhea.

- **Lead PHD Section:** HIV, STD, and TB
- **Current partners:** LPHAs, Tribes in Oregon, community-based organizations and state agencies.
- **Plan alignment:**
 - EndHIV/STI Oregon Strategic Plan. https://www.endhivoregon.org/wp-content/uploads/2023/08/OHA_EndHIVOregon_5-year-strategy-1.pdf

10. HIV treatment

Increase the proportion of people living with HIV with undetectable virus.

- **Lead PHD Section:** HIV, STD, and TB
- **Current partners:** LPHAs, Tribes in Oregon, community-based organizations and state agencies.
- **Plan alignment:**
 - EndHIV/STI Oregon Strategic Plan. https://www.endhivoregon.org/wp-content/uploads/2023/08/OHA_EndHIVOregon_5-year-strategy-1.pdf

11. Tuberculosis treatment

Help people complete TB treatment within twelve months.

- **Lead PHD Section:** HIV, STD, and TB
- **Current partners:** LPHAs, community-based organizations, state agencies, CCOs and health systems.
- **Plan alignment:**
 - OHA PHD TB Elimination Plan

12. Early detection through bloodspot screening

Improve health outcomes for children by improving and expanding Newborn Bloodspot Screening follow-up.

- **Lead PHD Section:** Oregon State Public Health Laboratory

- **Current partners:** LPHAs, Tribes in Oregon, community-based organizations and health care providers.

13. Testing panels for newborn screening

Improve health outcomes by expanding testing panels within the Newborn Bloodspot Screening Program and Communicable Disease Program.

- **Lead PHD Section:** Oregon State Public Health Laboratory
- **Current partners:** State agencies

14. Access to diagnostic testing across Oregon

Improve access to diagnostic testing in Tribal, rural, remote and historically underserved communities.

- **Lead PHD Section:** Oregon State Public Health Laboratory
- **Current partners:** LPHAs, Tribes in Oregon, community-based organizations, health care providers, CCOs and health systems.

15. Efficiency and reporting speed of laboratory systems

Modernize and automate laboratory systems to streamline data and increase efficiency in reporting results and metrics.

- **Lead PHD Section:** Oregon State Public Health Laboratory
- **Current partners:** LPHAs, Tribes in Oregon, community-based organizations, health care providers and state agencies.
- **Public health data investments:** Yes

16. WIC enrollment

Increase the number of eligible pregnant and postpartum individuals, infants and children under the age of five enrolled in the Women Infant and Children Program.

- **Lead PHD Section:** Nutrition and Health Screening (WIC Program)
- **Current partners:** LPHAs, Tribes in Oregon, state agencies, CCOs and health systems.

17. Access to breastfeeding support

Increase access to community level breastfeeding support, including WIC breastfeeding peer counselors and WIC staff with advanced breastfeeding education or certification.

- **Lead PHD Section:** Nutrition and Health Screening (WIC Program)
- **Current partners:** LPHAs, State agencies, CCOs and health systems.

18. Healthy food access

Help children from birth through 17 years of age and their families access healthy food through connections and referrals.

- **Lead PHD Section:** Family and Child Health
- **Current partners:** LPHAs, Tribes in Oregon, community-based organizations, state agencies, CCOs and health systems, schools, Head Start programs and education partners.
- **Plan alignment:**
 - Title V Priority of Food Insufficiency. <https://www.oregon.gov/oha/ph/healthypeoplefamilies/datareports/mchttitlev/pages/index.aspx>

19. Integrated routine dental care

Promote routine dental care by increasing public and provider education, preventive treatment and collaboration with providers.

- **Lead PHD Section:** Family and Child Health
- **Current partners:** CCOs and health systems, schools, Head Start programs, education partners, health care providers.

20. Youth access to nicotine

Reduce youth nicotine use by making it easier for everyone to avoid tobacco and limiting how much young people see tobacco ads and products in stores.

- **Lead PHD Section:** Health Promotion and Chronic Disease Prevention
- **Current partners:** LPHAs, Tribes in Oregon, community-based organizations, state agencies, CCOs and health systems, Regional Health Equity Coalitions, schools, Head Start programs, education partners and health care providers.
- **Plan alignment:**
 - HPCDP Strategic Plan. <https://www.oregon.gov/oha/PH/DISEASES/CONDITIONS/CHRONICDISEASE/Documents/hpcdp-strategic-plan.pdf>
 - OHA Key Performance Metric
 - Alcohol and Drug Policy Commission Strategic. [Plan https://www.oregon.gov/adpc/SiteAssets/Pages/index/Statewide%20Strategic%20Plan%20Final%20\(1\).pdf](https://www.oregon.gov/adpc/SiteAssets/Pages/index/Statewide%20Strategic%20Plan%20Final%20(1).pdf)

- Juul settlement agreement. <https://www.juulclassaction.com/Content/Documents/JLI%20Settlement%20Agreement.pdf>

21. Help those in treatment quit commercial tobacco and nicotine products

Focus on supporting people living with mental health and/or substance use conditions to quit commercial tobacco and nicotine products by increasing their access to treatment and support, including nicotine replacement therapies.

- **Lead PHD Section:** Health Promotion and Chronic Disease Prevention
- **Current partners:** Community-based organizations, state agencies and health care providers.
- **Plan alignment:**
 - Oregon State Cancer Plan. <https://www.oregon.gov/oha/PH/DISEASESCONDITIONS/CHRONICDISEASE/CANCER/Pages/index.aspx>
 - HPCDP Strategic Plan. <https://www.oregon.gov/oha/PH/DISEASESCONDITIONS/CHRONICDISEASE/Documents/hpcdp-strategic-plan.pdf>

22. Help people quit tobacco and nicotine products

Help people quit using commercial tobacco and nicotine products by making it easier for them to get the treatments and support they need.

- **Lead PHD Section:** Health Promotion and Chronic Disease Prevention
- **Current partners:** LPHAs, Tribes in Oregon, community-based organizations, state agencies, health care providers and academic partners.
- **Plan alignment:**
 - Oregon State Cancer Plan. <https://www.oregon.gov/oha/PH/DISEASESCONDITIONS/CHRONICDISEASE/CANCER/Pages/index.aspx>
 - HPCDP Strategic Plan. <https://www.oregon.gov/oha/PH/DISEASESCONDITIONS/CHRONICDISEASE/Documents/hpcdp-strategic-plan.pdf>

23. Chronic condition management

Make it easy for people to get into programs that help them manage their own health and care for the health of others.

- **Lead PHD Section:** Health Promotion and Chronic Disease Prevention

- **Current partners:** Tribes in Oregon, community-based organizations, CCOs and health systems and health care providers.
- **Plan alignment:**
 - HPCDP Strategic Plan. <https://www.oregon.gov/oha/PH/DISEASESCONDITIONS/CHRONICDISEASE/Documents/hpcdp-strategic-plan.pdf>

24. Reduce cancer rates

Create and implement a statewide strategy to reduce the cancer disease burden in Oregon.

- **Lead PHD Section:** Health Promotion and Chronic Disease Prevention
- **Current partners:** Tribes in Oregon, state agencies and academic partners.
- **Plan alignment:**
 - Oregon State Cancer Plan. <https://www.oregon.gov/oha/PH/DISEASESCONDITIONS/CHRONICDISEASE/CANCER/Pages/index.aspx>
 - HPCDP Strategic Plan. <https://www.oregon.gov/oha/PH/DISEASESCONDITIONS/CHRONICDISEASE/Documents/hpcdp-strategic-plan.pdf>

25. Reduce rates of dementia

Help people of all ages maintain brain health to prevent and delay dementia through risk reduction, early screening, care optimization, and caregiver support.

- **Lead PHD Section:** Health Promotion and Chronic Disease Prevention.
- **Current partners:** State agencies.
- **Plan alignment:**
 - State Plan to Address Alzheimer’s Disease and Related Dementias. https://act.alz.org/site/DocServer/SPADO_Report.pdf

26. Comprehensive health education

Support K-12 comprehensive health education by providing teacher training and resources to promote knowledge and skills building in students.

- **Lead PHD Section:** Adolescent Health, Screenwise & Reproductive Health
- **Current partners:** LPHAs, Tribes in Oregon, community-based organizations, state agencies, and schools, Head Start programs, education partners.

27. Reproductive health

Offer free or low-cost comprehensive reproductive health services, including birth control, abortion services, and breast and cervical cancer screening services, to individuals across the state who have low incomes and are uninsured or underinsured.

- **Lead PHD Section:** Adolescent Health, Screenwise & Reproductive Health
- **Current partners:** LPHAs, community-based organizations, state agencies, CCOs, health systems and health care providers.
- **Plan alignment:**
 - Oregon State Cancer Plan. <https://www.oregon.gov/oha/PH/DISEASES/CONDITIONS/CHRONICDISEASE/CANCER/Pages/index.aspx>

28. Reduce falls, fall injuries and fall deaths

Reduce falls, fall injuries and fall deaths among older adults through sharing of resources and information with those at-risk of falls and prevention partners, improving equitable access to fall prevention programs and sharing timely and accessible falls data. Collaborate with partners and initiatives statewide.

- **Lead PHD Section:** Injury and Violence Prevention
- **Current partners:** LPHAs, Tribes in Oregon, community-based organizations, State agencies, CCOs and health systems, Regional Health Equity Coalitions, schools, Head Start programs, education partners and health care providers.

29. Traditional health workers

Support connections between public health partners and community health worker certification programs to increase access to community health workers.

- **Lead PHD Section:** OSPHD, Policy & Partnerships
- **Current partners:** LPHAs, community-based organizations and the Office of Rural Health.
- **Plan alignment:**
 - OHA Strategic Plan. <https://www.oregon.gov/oha/pages/strategic-plan.aspx>

30. Technical assistance for CHIPs

Increase SHIP alignment and technical assistance to organizations leading community health improvement plans (CHIPs) and in support of CCO quality metrics.

- **Lead PHD Section:** OSPHD, Policy & Partnerships
- **Current partners:** LPHAs, CCOs and health systems
- **Plan alignment:**
 - OHA Strategic Plan. <https://www.oregon.gov/oha/pages/strategic-plan.aspx>

31. Public health modernization

Build a modern public health system that is fully resourced and equipped to eliminate health inequities and respond to public health risks and emergencies in real time.

- **Lead PHD Section:** OSPHD, Policy & Partnerships
- **Current partners:** LPHAs, Tribes in Oregon, community-based organizations, state agencies, CCOs and health systems, Regional Health Equity Coalitions, schools, Head Start programs, education partners and health care providers.
- **Public health data investments:** Yes
- **Plan alignment:**
 - Public Health Accountability Metrics. <https://www.oregon.gov/oha/ph/about/pages/accountabilitymetrics.aspx>



Emergency preparedness

The public health system prepares individuals and communities to protect people’s health when events that threaten public health occur. Public health collaborates with partners to develop regional preparedness plans; respond to health threats and provide regional and statewide support for Tribes in Oregon, LPHAs, hospitals and health systems to track disease and provide health services. Goals include:

- Public health emergency response systems that are locally and culturally relevant and have resources to respond to the different needs of diverse communities.
- Communication systems and practices that include all community members.
- Prioritize global health security as a community, state and global leadership issue.

Objective: Heat-related illness emergency department and urgent care visits

Objective: Reduce heat-related illness emergency department and urgent care visits by 50%.

Baseline: 1.79 heat-related illness visits (per 1M) per day at or above 80°F heat index (2023)

2029 goal: 0.9 heat-related illness visits (per 1M) per day at or above 80°F heat index

Data source: Oregon ESSENCE

Strategies

1. Reduce health impacts from climate hazards*

Reduce community health impacts from wildfire smoke and heat by funding partners to implement healthy home interventions, such as weatherization and air filtration, using culturally and socially specific community engagement practices.

- **Lead PHD Section:** Environmental Public Health

* This strategy is repeated within the Healthy Environments priority.

- **Current partners:** Community-based organizations, Tribes in Oregon and Healthy Homes Grant Program Advisor Network.

2. Readiness plans

Maintain regional health care coalition readiness plans that cover all of Oregon. Each of the five coalition's readiness plans identifies key documentation related to regional to state coordination of:

- Mitigation strategies for responding to health and medical surge emergencies
- Resource management and information sharing
- Operational and continuity of operations agreements
- Strategic priority activities and improvement planning, including training and exercises

-
- **Lead PHD Section:** Health Security, Preparedness and Response
 - **Current partners:** Tribes in Oregon, health care providers, county and Tribal emergency managers, long-term care, LPHAs and state agencies.

3. Hospital bed capacity

Support the Oregon Medical Coordination Center's capacity to place patients 365 days a year. The Oregon Medical Coordination Center helps hospitals place patients when hospitals lack the capacity or capability to place patients at their facilities or within their systems.

- **Lead PHD Section:** Health Security, Preparedness and Response
- **Current partners:** Hospitals and health systems, Tribes in Oregon and EMS agencies.
- **Public health data investments:** Yes

4. Communicating public health preparedness

Help individuals and households to be ready for public health emergencies. Public health agencies at all levels can identify new issues and develop websites, printed materials, videos and other materials that provide important information directly to community members. This information should explain how different community groups are affected and what steps they can take to protect their health. The information needs to be available in many languages and formats.

- **Lead PHD Section:** Health Security, Preparedness and Response
- **Current partners:** CCOs and health systems, community-based organizations, Tribes in Oregon, health care providers, LPHAs, Regional Health Equity Coalitions, county and Tribal emergency managers and state agencies.

5. Disease tracking

Maintain and use the Oregon ESSENCE syndromic surveillance system to track emergency room and urgent care visits across Oregon to spot and respond to community problems including bad air quality, exposure to harmful chemicals, disease outbreaks, natural disasters, injuries, overdoses or violence.

- **Lead Section:** Acute and Communicable Disease Prevention
- **Partners:** Tribes in Oregon, health care providers, LPHAs and state agencies.
- **Public health data investments:** Yes
- **Plan alignment:**
 - Public Health Accountability Metrics. <https://www.oregon.gov/oha/ph/about/pages/accountabilitymetrics.aspx>
 - CDC Overdose Data2Action plan. <https://www.cdc.gov/overdose-prevention/php/od2a/index.html>
 - CDC Suicide Prevention Plan. <https://www.cdc.gov/suicide/resources/prevention.html>

Conclusion

Oregon's state health improvement plan for 2025–29 is ambitious yet achievable. Using proven strategies and ongoing input from partners and community members, OHA-PHD is committed to making improvements to the health of those who live and work in Oregon.

[Annual updates of data through the dashboard and reports](#) will contribute to transparency on progress and any developments in state level data. Oregon residents deserve increased insight into information that tracks health behaviors and health outcomes.

Insights into how the health of those who live and work in Oregon changes and where Oregon makes progress in the next five years will provide direction for Oregon's next state health improvement plan.

Appendix A: Steering committee values

The Steering Committee developed the following four values, defining how they wanted to work together and with OHA-PHD throughout the State Health Assessment and State Health Improvement Plan process.

Equity

The steering committee will live this commitment to equity when it:

- Ensures an inclusive statewide process.
- Recognizes current and historical injustices and the enduring impact on individuals in communities when shaping state health priorities.

The equity value will be manifested in the context of the SHIP if it:

- Addresses the needs of all people as determined by people and communities themselves.
- Reflects a definition of people and communities that have historically been marginalized or underserved including older adults, young children, disabled people, domestic violence victims, veterans, single-parent households, and people living in rural/frontier areas - including those from all racial backgrounds.
- Encourages capacity building resources and long-term investments as determined by communities.
- Includes capacity building resources to support ongoing voice of individuals and communities as the plan is implemented.
- Addresses immediate health concerns as well as long-term well-being for people living in Oregon.

Transparency

OHA-PHD maintains open lines of communication with the SC and communities, and there is clarity around the process, goals, and outcomes of the work. The SHA and SHIP priorities are clear, focused, and actionable.

Accountability

- The steering committee is centered and driven by the shared group agreements. Each member understands their roles and responsibilities and contributes to the best of their ability to help OHA-PHD develop a plan informed by data that accounts for the needs of each person in the state.

- Regular opportunities for feedback are provided to committee members to ensure open communication and adjustments in how the process is managed and facilitated by OHA-PHD.

Collaboration

- The committee works towards common goals and fosters a sense of shared purpose for public health outcomes.
- The steering committee is engaged in collaborative partnerships with local organizations, health care systems, and community leaders to inform community-driven priorities to guide planning and priorities.

Appendix B: Community engagement

OHA PHD engaged in community engagement through presentations at meetings the agency convenes, meetings convened by partners and other ad hoc spaces. This process engaged at least 820 participants. The number of participants in each meeting is approximate.

Date	Meeting name	Participants	Primary communities served	Meeting type
03/11/25	9 Tribes Quarterly Behavioral Health Meeting	60	Tribal prevention staff, peer staff, folks who work with tribal members	In-person
03/13/25	Colaboración Latino-Hispana Unidos por la Salud	31	Latino/a	Virtual
3/13/25	Coordinated care organization (CCO) community health improvement plan meeting, hosted by OHA Health Policy and Analytics	22	Coordinated care organization community health improvement plan coordinators	Virtual
3/13/25	Public Health Advisory Board meeting	16	Public Health Advisory Board members	Virtual
3/14/25	OHA Tribal Monthly meeting	25	Tribal representatives and OHA staff	In-person
3/13/25	Wallowa County local community health partnership (LCHP)	10	Wallowa County residents	Virtual
3/14/25	Public Health PHorum	120	OHA Public Health Division staff	Virtual
3/19/25	Grant County local community health partnership (LCHP)	18	Grant County residents	Virtual
03/20/25	Conference of Local Health Officials meeting	41	Local public health officials	Virtual
03/21/25	Union County local community health partnership (LCHP)	20	Union County residents	Virtual

Date	Meeting name	Participants	Primary communities served	Meeting type
03/12/25	Tribal Public Health Modernization Community of Practice	15	Tribal Public Health Staff	Virtual
03/18/25	Gorge Native American Collaborative	36	Native American participants	Virtual
03/19/25	Black Public Health Workgroup Meeting	14	Black, African, African-American	Virtual
03/20/25	OHA Public Health Division Youth Advisory Council meeting	15	Youth members	Virtual
03/26/25	Wheeler County local community health partnership (LCHP)	9	Wheeler County residents	Virtual
04/01/25	Baker local community health partnership (LCHP)	15	Baker County residents	Virtual
04/04/25	Public Health Equity Grantees, FYI Friday meeting	65	Community-based organization partners from across Oregon	Virtual
04/08/25	Harney County local community health partnership (LCHP)	10	Harney County residents	Virtual
04/04/25	Malheur County Health Dept. (MCHD) CBO & LPHA monthly strategic meeting	6	Malheur County residents	Virtual
04/03/25	Community Connections	50	Public health community-based organization partners	Virtual
04/07/25	Lane County collaborative	8	Lane County community-based organizations and local public health authority staff	Virtual
04/22/25	Disability pre-conference group at the OHA CBO Public Health Conference	20	People with disabilities served by public health community-based organization partners	In-person

Date	Meeting name	Participants	Primary communities served	Meeting type
04/22/25	Asian pre-conference group at the OHA CBO Public Health Conference	20	Asian-serving community-based organizations	In-person
05/01/25	Public Health Modernization: Together Toward Healthy Communities	55	Community-based organizations, local public health authorities and state staff	Virtual
04/28/25	Future Generations Collaborative	12	Urban Native Americans	Virtual
04/18/25	Umatilla local community health partnership (LCHP)	15	Umatilla County residents	Virtual
04/15/25	Malheur County local community health partnership (LCHP)	15	Malheur County residents	Virtual
04/08/25	Harney County local community health partnership (LCHP)	5	Harney County residents	Virtual
04/03/25	Morrow local community health partnership (LCHP)	12	Morrow County residents	Virtual
04/30/25	Eastern Oregon CCO Community Advisory Committee (CAC)	20	Eastern Oregon residents	In person
04/10/25	Lake County local community health partnership (LCHP)	10	Lake County residents	Virtual
05/01/25	Gilliam County local community health partnership (LCHP)	5	Gilliam County residents	Virtual
05/01/25	Sherman County local community health partnership (LCHP)	5	Sherman County residents	Virtual
5/14/25	McMinnville Community Meeting	20	Community based organization and social services staff from across Yamhill County	In-person

Other formats and languages

You can get this document in other languages, large print, braille or a format you prefer free of charge. Contact the Office of the State Public Health Director at PublicHealth.Policy@odhsoha.oregon.gov or (971) 673-2111. We accept all relay calls.

Public Health Division

Office of the State Public Health Director

800 NE Oregon Street, Suite 930
Portland, OR, 97232

healthoregon.org

PublicHealth.Policy@odhsoha.oregon.gov

(971) 673-1222



200-1194924a_25 (02/2026)