



Who Is More at Risk?

COVID-19 is a disease that can spread easily when people live and work close together. Farm owners and managers should have plans to protect the health of workers and those who live in employer-provided housing.

Some people are at higher risk of getting seriously sick from COVID-19.



Older than 65 years of age



Chronic lung disease



Compromised immune system

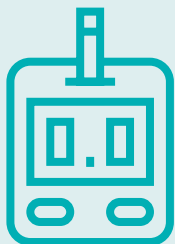
(e.g., cancer or treatments that suppress the immune system)



Asthma



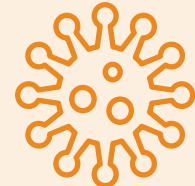
Chronic heart disease



Diabetes



High blood pressure



Anyone can get sick with COVID-19. People can spread the virus without showing any symptoms. That's why it is so important for everyone to work together to stay safe.



Resources for workers

Money is available for farm workers who have to stop working because they are sick with COVID-19 or need to quarantine.

Find a community navigator and apply for help by going to: <https://workerrelief.org/find-a-navigator/>.

Coronavirus fact sheets (Centers for Disease Control and Prevention)

- Spanish and English: <https://www.cdc.gov/coronavirus/2019-ncov/communication/factsheets.html>

Prevention flyer (Oregon Health Authority)

- Spanish: <https://sharedsystems.dhsoha.state.or.us/DHSForms/Served/ls2681.pdf>
- English: <https://sharedsystems.dhsoha.state.or.us/DHSForms/Served/le2681.pdf>

Social or physical distancing flyer (Oregon Health Authority)

- Spanish: <https://sharedsystems.dhsoha.state.or.us/DHSForms/Served/ls2268.pdf>
- English: <https://sharedsystems.dhsoha.state.or.us/DHSForms/Served/le2268.pdf>

More resources

- Spanish: <https://sharedsystems.dhsoha.state.or.us/DHSForms/Served/ls2349E.pdf>
- English: <https://sharedsystems.dhsoha.state.or.us/DHSForms/Served/le2349E.pdf>