

# Oregon's Health System Transformation

*Better health, better care, lower cost*

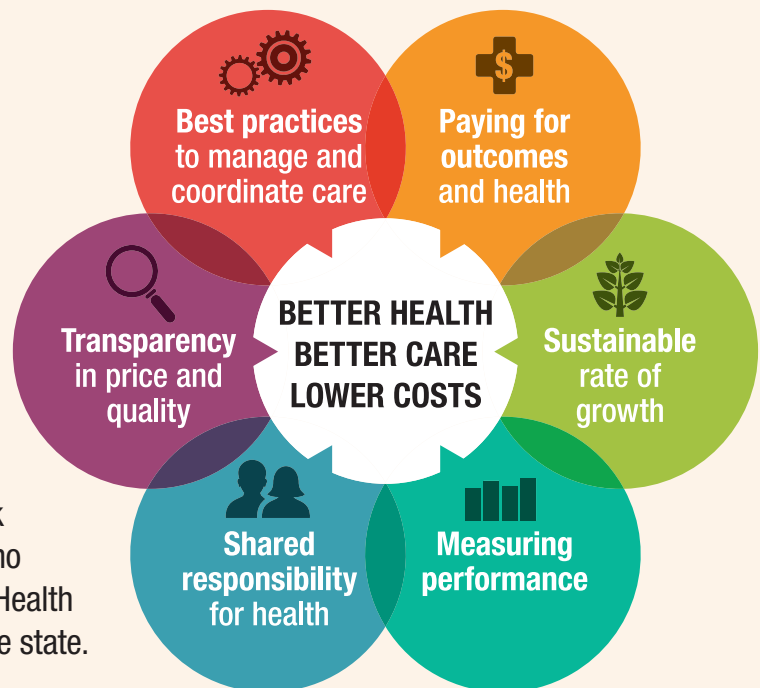
Oregon's health system transformation started with the creation of coordinated care organizations (CCOs), which serve Oregon Health Plan members. The Oregon Health Authority is now working to spread the coordinated care model to other plans and payers. The ultimate goal is to bring better health, better care and lower costs to Oregonians.

The coordinated care model provides Oregonians with improved, more integrated care. By focusing on primary care and prevention, health plans using this model are able to better manage chronic conditions and keep people healthy and out of the emergency department.

## What are coordinated care organizations?

A coordinated care organization (CCO) is a network of all types of health care providers (physical health care, addictions and mental health care, and some dental care providers) who have agreed to work together in their communities to serve people who receive health care coverage under the Oregon Health Plan (Medicaid). Sixteen CCOs operate across the state.

Key elements of the coordinated care model include:



## How coordinated care organizations work

CCOs are local. They provide integrated services for physical, mental and now dental care. CCOs are accountable for health outcomes of the population they serve. They are governed by a partnership among health care providers, community members and stakeholders in the health systems that have financial responsibility and risk.

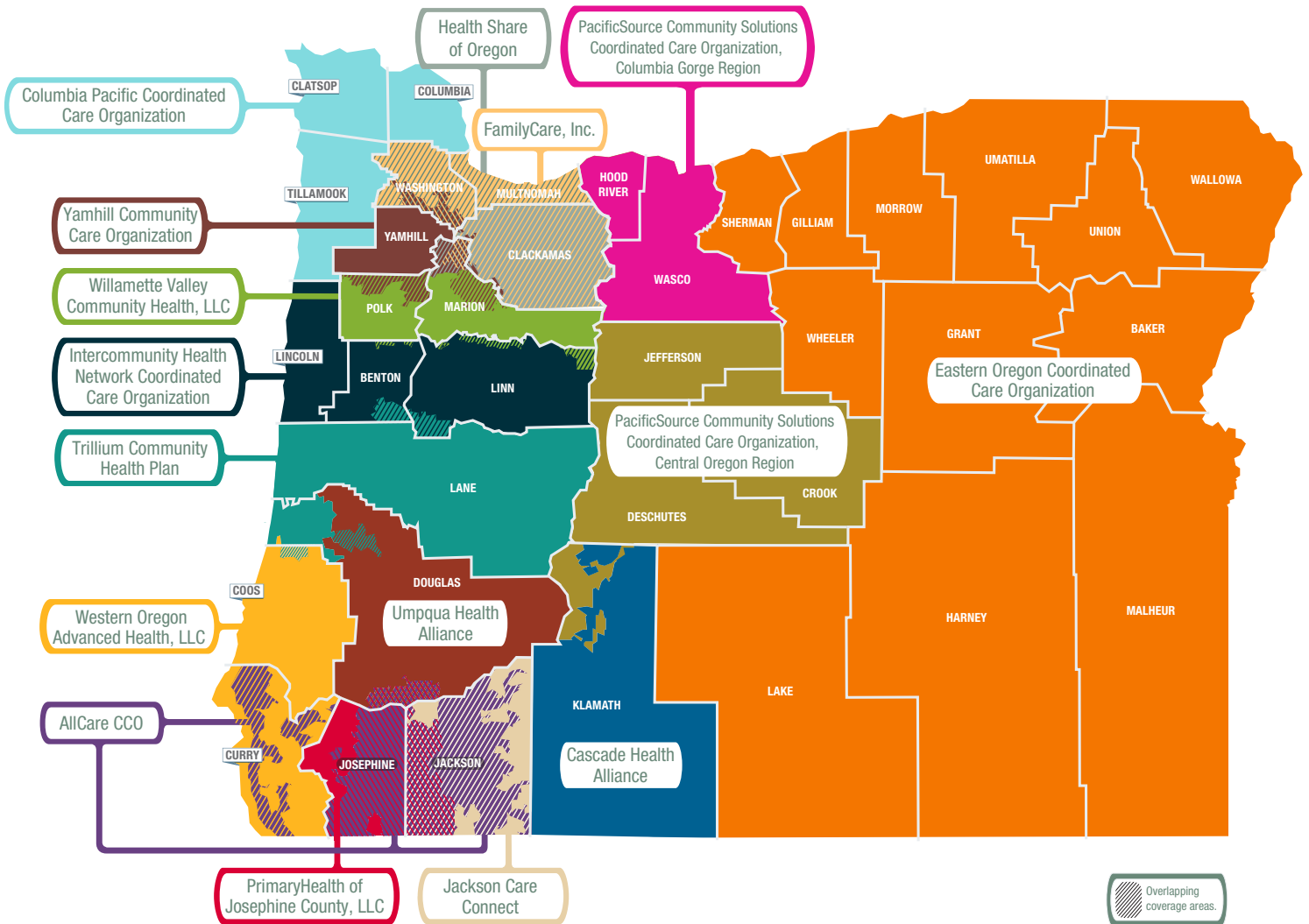
## CCO child health metrics

Through the coordinated care model, the state measures and pays for performance. In 2014, we showed large improvements on child health metrics including:

- ✓ **Developmental screening in the first 36 months of life.** Developmental screening rates have increased nearly 22% statewide since 2011.
- ✓ **Mental and physical health assessments within 60 days for children in DHS custody.** Assessment rates have increased 16.4% since baseline data, with current statewide assessment rates at 70%.

The full 2014 performance report is available at: [www.oregon.gov/oha/metrics](http://www.oregon.gov/oha/metrics)

# Coordinated Care Organization Service Areas



# Early Learning System Transformation

*Supporting all of Oregon's young children and families to learn and thrive.*

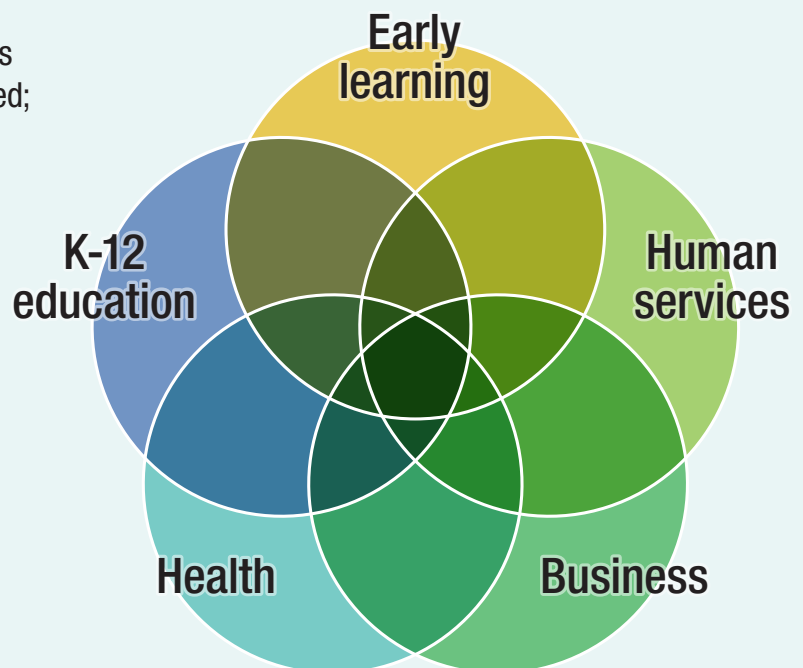
In 2013, the Oregon Legislature passed House Bill 2013. The resulting statute authorized the Early Learning Council to create 16 regional and community-based Early Learning Hubs to make supports more available, accessible, and effective for children and families, particularly those who are historically overrepresented in the opportunity gap and underrepresented in services.

The Early Learning Hubs are directed to accomplish three specific goals:

- 1 Create an early childhood system that is aligned, coordinated and family-centered;
- 2 Ensure children arrive at school ready to succeed; and
- 3 Ensure Oregon's young children live in families that are healthy, stable and attached.

The goals of the Early Learning Hubs are to:

- Identify the underserved children in their communities;
- Evaluate the needs of those children and families; and
- Ensure that programs and services reach them and meet their needs.



Hubs help leverage and coordinate existing services such as home visiting, child care, preschool and wrap around services to share lessons learned across service providers. Hubs encourage the reduction of duplicated services to provide the most relevant and effective services to families.

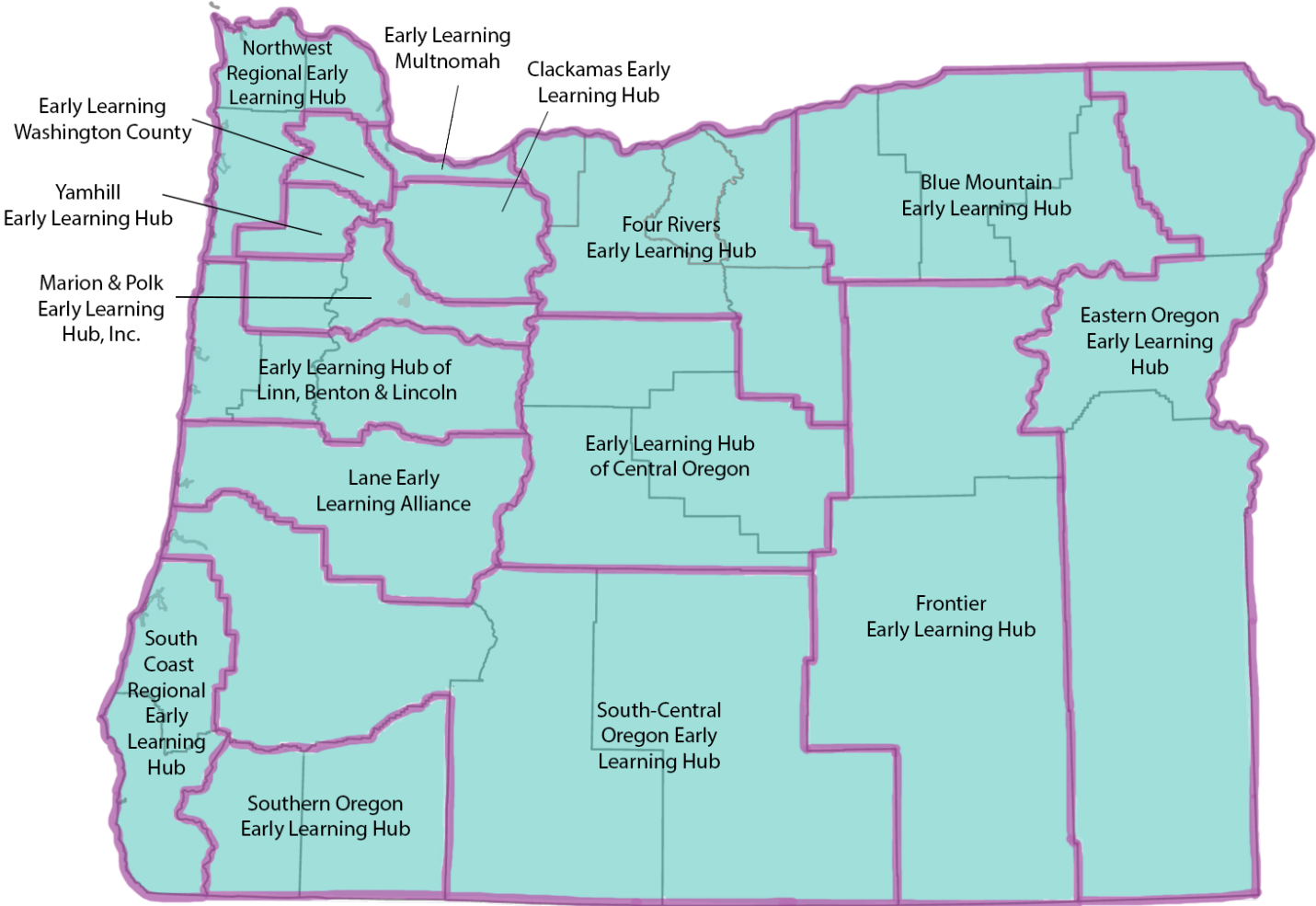
## Early Learning Hub metrics

Early Learning Hubs currently report on short-term metrics; medium and long-term metrics will be introduced and measured for years three and beyond.

Metrics shared with the health system:

- The percentage of children who receive a developmental screen before the age of three (CCO Incentive Metric); and
- The percentage of children on OHP who have six or more well-child visits by 15 months of age (CCO State Performance Measure).

# Oregon's Early Learning Hubs



For more information on about Early Learning Hubs and the Early Learning System transformation, visit the Early Learning Division Website: <http://oregonearlylearning.com/>